

APEX Series™

instruments are manufactured using high-tech equipment and high-end processing to ensure our customers get the highest quality product at a very economical price. The APEX line of instruments is designed to last and maintain a high quality throughout their life. APEX Series instruments use surgical grade 420 stainless steel forgings with high grade of tool steel inserts to provide you with one of the finest instrument lines. Along with our standard high quality material, the Apex plier line delivers high quality pliers with the best corrosion resistance.

Apex Plier Line is today's answer to the decade old problem of delivering orthodontic instruments with adequate corrosion resistance. The Apex Plier Line has a 420 series stainless steel box jointed forging. What makes the Apex Plier Line extraordinary is the highly corrosion resistant steel inserts that not only withstand the rigors of cutting, bending and forming highly tensile orthodontic wires, but contain the highest level of chromium available in any tool steel.

Because of the chemical and basic elemental properties of this new compaction metal, combined with an advanced processing methodology, we have found a material with significant advantages over both tool steel and tungsten carbide. The Apex Plier Line is the solution to brittle, fractured carbide inserts, flaking chrome plating and all the other compromises previously necessary to make corrosion resistant instruments.

Warranty

All RMO® APEX Series instruments offer an unconditional one year warranty for manufacture defects, with an additional lifetime guarantee for insert debonding. Wear is a normal result of use and is not a defect in workmanship. RMO® will not replace or exchange cutters that have been in service for six months or longer. All RMO® APEX Series instruments are fully guaranteed to be free of defects in materials and workmanship. If the instrument is misused, abused or not properly maintained and cleaned, the warranty claims will be void.

Return

All RMO® APEX Series instruments, which are unused, unopened and in the original package may be returned for full credit within 90 days of purchase invoice. If defective and not misused or tampered with in any manner, it may be returned to RMO® within 90 days for replacement or refund.

Repair

For repair to the APEX Series instruments outside the warranty, call RMO® Customer Service, your sales representative or your local distributor for repair recommendations. RMO® Customer Service number 1-800-525-6375.

Tired of this?



Want this?



Apex – technology metallurgy delivers inserted tip materials with extremely high chromium content.

How Plier - Straight

- 2.5mm tips
- Matching serrated pads assure a firm, positive grip
- Rounded tips for patient comfort and safety
- Box joint



Wire Range

.012" - .028" (0.305mm - 0.711mm) Round
.022" x .028" (0.559mm x 0.711mm) Rectangular

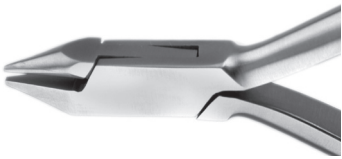
| Package Contains | Order Number |
|------------------|--------------|
| 1 | T00112 |



Weingart Plier

- Fully serrated cross-cut inserted tip at the most convenient working angle
- Features bowed jaws that won't pinch the patient's lip
- Box joint

| Wire Range | Package Contains | Order Number |
|---|------------------|--------------|
| .012" - .028" (0.305mm - 0.711mm) Round | 1 | T00556 |
| .022" x .028" (0.559mm x 0.711mm) Rectangular | | |



Bird Beak Plier

- Versatile plier for heavy wire bending
- Round and pyramid beaks are smooth to prevent wire scoring
- Can also be used to form springs
- Tip sizes are .035" round and square
- Box joint

| Wire Range | Package Contains | Order Number |
|---|------------------|--------------|
| .020" - .032" (0.508mm - 0.813mm) Round | 1 | T00138 |
| .022" x .028" (0.559mm x 0.711mm) Rectangular | | |



Cinch Back Plier

- This plier is made with the optimum angle for working behind the buccal tube
- Serrated tips are tapered to a fine point allowing access to hard-to-reach areas
- Box joint

| Wire Range | Package Contains | Order Number |
|---|------------------|--------------|
| .014" - .020" (0.356mm - 0.508mm) Round | 1 | T00159 |
| .022" x .025" (0.559mm x 0.635mm) Rectangular | | |



3-jaw Plier

- Precision tips for accurate wire and clasp adjusting and contouring
- Box joint

| Wire Range | Package Contains | Order Number |
|---|------------------|--------------|
| .018" - .032" (0.457mm - 0.813mm) Round | 1 | T00201 |
| .022" x .028" (0.559mm x 0.711mm) Rectangular | | |

Wire Contouring Plier

- Smooth, non-grooved surface with chamfered forming surfaces for stress free bending
- Box joint



| Wire Range | Package Contains | Order Number |
|---|------------------|--------------|
| .016" - .036" (0.406mm - 0.914mm) Round | 1 | T00204 |
| .022" x .028" (0.559mm x 0.711mm) Rectangular | | |

Optical Plier

- Concave/convex beaks bend round or rectangular wire
- Box joint



| Wire Range | Package Contains | Order Number |
|---|------------------|--------------|
| .012" - .032" (0.305mm - 0.813mm) Round | 1 | T00351 |
| .022" x .025" (0.559mm x 0.635mm) Rectangular | | |

Stop/V-Bend Plier

- Special design makes 1mm "V" bends to shorten arch wires or provide a positive stop
- Excellent for placing stops in Nickel Titanium wires
- Box joint



| Wire Range | Package Contains | Order Number |
|---|------------------|--------------|
| .012" - .020" (0.305mm - 0.508mm) Round | 1 | T00221 |
| .022" x .028" (0.559mm x 0.711mm) Rectangular | | |

Loop Forming and Closing Plier (Nance Style)

- Forms precision loop with four-step tip (3, 4, 5 and 6mm)
- Serrated tips prevent wire slippage
- Box joint



| Wire Range | Package Contains | Order Number |
|---|------------------|--------------|
| .014" - .020" (0.356mm - 0.508mm) Round | 1 | T00001 |
| .022" x .028" (0.559mm x 0.711mm) Rectangular | | |

Tweed Loop Forming Plier

- Concave/convex beak makes precise Omega loops
- Tip has three forming sections: .045", .060" and .093"
- Box joint



| Wire Range | Package Contains | Order Number |
|---|------------------|--------------|
| .012" - .020" (0.305mm - 0.508mm) Round | 1 | T00350 |
| .016" x .022" (0.406mm x 0.559mm) Rectangular | | |
| Replacement Tip | 1 | T00350t |



instruments

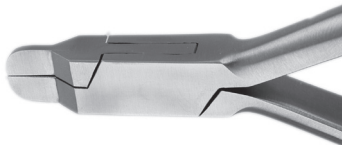
APEX SERIES: WIRE BENDING PLIERS



Lingual Arch Forming Plier

- Plier makes consistent and repeatable bends
- Forms double-back and triple-back bends in .030" and .036" wire for use with lingual sheaths
- Jaws have four grooves and are sized for any type of larger wires
- Box joint

| Wire Range | Package Contains | Order Number |
|---|------------------|--------------|
| .020" - .036" (0.508mm - 0.914mm) Round | 1 | T00420 |
| .018" x .025" (0.457mm x 0.635mm) Rectangular | | |



Rectangular Arch Bending Plier (Tweed Style)

- Ideal for forming square and rectangular arch wires
- Thin jaws are parallel at .020" opening
- Forms offsets and 90° bends on all types of arch wire
- Box joint

| Description | Package Contains | Order Number |
|---|------------------|--------------|
| .022" x .028" (0.559mm x 0.711mm) Rectangular | 1 | T00442 |



Crimpable Hook Plier

- Angled beak of the plier allows for precise placement of the hooks on the arch wire
- Hook is secure after on squeeze

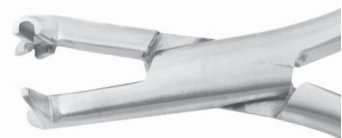
| Package Contains | Order Number |
|------------------|--------------|
| 1 | T00130 |



Step Plier

- Step plier is equipped with a double-sided offset beak for bayonet style step bend
- Creates right hand or left hand step-up or step-downs
- Box joint
- Round wire range .014" - .020" (0.356mm - 0.508mm)
- Rectangular max wire size .022" x .028" (0.559mm x 0.711mm)

| Step Size | Package Contains | Order Number |
|-----------|------------------|--------------|
| .5mm | 1 | T00132 |
| 1mm | 1 | T00134 |



NiTi Crimping Plier

- Forms a smooth bend or crimp without nicking Nickel Titanium wire

| Description | Package Contains | Order Number |
|---|------------------|--------------|
| .022" x .028" (0.559mm x 0.711mm) Rectangular | 1 | T00160 |

Pin and Ligature Cutter

- Concave design front for maximum vision when cutting
- TRU-CHROME® stainless steel and Elgiloy® wire only
- Box joint



| Wire Range | Package Contains | Order Number |
|--|------------------|--------------|
| .010" - .018" (0.254mm - 0.457mm) Soft Wires | 1 | T00552 |

Mini Pin and Ligature Cutter

- Fine tips to easily access hard-to-reach areas
- Cuts wire ligatures, pins and elastics
- TRU-CHROME® stainless steel and Elgiloy® wire only
- Box joint



| Wire Range | Package Contains | Order Number |
|--|------------------|--------------|
| .010" - .014" (0.254mm - 0.356mm) Soft Wires | 1 | T00551 |

Safety Hold Distal End Cutter

- Safety hold is ideal for cutting wires within the patient's mouth
- Plier shear-cuts and holds arch wire within .5mm of the buccal tube
- Box joint



| Wire Range | Package Contains | Order Number |
|--|------------------|--------------|
| .012" - .020" (0.305mm - 0.508mm) Round .022" x .028" (0.559mm x 0.711mm) Rectangular | 1 | T00550 |

Standard Flush Cut and Hold Distal End Cutter

- This unique design cuts wires flush with the buccal tube while holding fragments with a wire spring
- Box joint



| Wire Range | Package Contains | Order Number |
|--|------------------|--------------|
| .012" - .020" (0.305mm - 0.508mm) Round .022" x .028" (0.559mm x 0.711mm) Rectangular | 1 | T00566 |

Wire Range

.02" (0.5mm), .014" - .020" (0.356mm - 0.508mm) Round
.022" x .028" (0.559mm x 0.711mm) Rectangular

.04" (1mm)



Distal End Cutter With Long Handle

- Cuts and holds arch wire within .5mm of the buccal tube
- Long handle design allows better control behind second molars, also results in less force to cut
- Box joint

| Wire Range | Package Contains | Order Number |
|---|------------------|--------------|
| .012" - .020" (0.305mm - 0.508mm) Round | 1 | T00554 |
| .022" x .028" (0.559mm x 0.711mm) Rectangular | | |



Hard Wire Cutter

- The extra strong edges make it one of the most popular cutters
- 15° cutting angle for easy intraoral access
- Capability of cutting ligatures at the tip
- Designed to cut all arch wires
- Box joint

| Wire Range | Package Contains | Order Number |
|---|------------------|--------------|
| .014" - .020" (0.356mm - 0.508mm) Round Hard Wire | 1 | T00553A |
| .022" x .028" (0.559mm x 0.711mm) Rectangular Hard Wire | | |



Hard Wire Cutter 2

- Designed to cut all arch wires
- Capability of cutting ligatures at the tip
- Box joint

| Wire Range | Package Contains | Order Number |
|---|------------------|--------------|
| .014" - .020" (0.356mm - 0.508mm) Round Hard Wire | 1 | T00553 |
| .022" x .028" (0.559mm x 0.711mm) Rectangular Hard Wire | | |

Force Module Separator

- Reverse action handles and long tapered tips make placing separating modules quick and easy

| Package Contains | Order Number |
|------------------|--------------|
| 1 | T00810 |

**Mathieu Wide Tip**

- Mathieu-style needle holder with serrated tips
- Positive locking ratchet permits instant opening/closing
- Box joint

| Package Contains | Order Number |
|------------------|--------------|
| 1 | T00030 |

**Mathieu Hole-Tip**

- Mathieu-style needle holder with .020" groove at tips for non-slip placement of elastic ligatures and other intraoral elastics without crushing, eliminating premature failure
- Box joint

| Package Contains | Order Number |
|------------------|--------------|
| 1 | T00031 |

**Synergy® Ligature Remover**

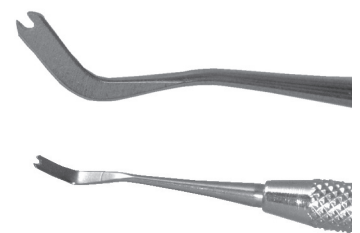
- Designed to fit between tie wings
- Small, rounded, approximately 45° angle tip
- Easy access to anterior and posterior teeth

| Package Contains | Order Number |
|------------------|--------------|
| 1 | T00520 |

**i-TTR Wire Director**

- Stainless Steel
- Precision knurled handle
- Angled notched ends for directing wire in and around bracket
- Recommended for use with the RMO® i-TTR Lingual Bracket System

| Package Contains | Order Number |
|------------------|--------------|
| 1 | T00701 |

**Self-Ligating Instrument**

- Shortened probe tip prevents excessive forces on door/clip
- High angle tip for easy use on anterior bracket doors
- Tapered shaft for increased stiffness and precision
- Large handle for ease of use

| Package Contains | Order Number |
|------------------|--------------|
| 1 | T00570 |





Direct Bond Bracket Holder

- Unique reverse action tweezers with finely serrated beaks for a non-slip grip
- Easy release of both metal and plastic direct bond brackets
- Fits narrow to wide twin

| Description | Package Contains | Order Number |
|-------------|------------------|--------------|
| Small | 1 | T00102 |



Direct Bond Remover - Straight

- Wedges between the base and the tooth surface and lifts off with virtually no stress
- Precision diamond honed wedges work on all types of brackets
- Box joint

| Package Contains | Order Number |
|------------------|--------------|
| 1 | T00546 |



Direct Bond Remover - Angled

- Quickly and safely removes direct bond brackets
- Angled precision edges allow for easy removal of brackets and excess bonding material
- Box joint

| Package Contains | Order Number |
|------------------|--------------|
| 1 | T00545 |



Posterior Band Remover

- Wedges under the band while the 5mm replaceable teflon bumper rests on the occlusal surface for easy band removal
- Box joint

| Description | Package Contains | Order Number |
|------------------|------------------|--------------|
| Remover | 1 | T00347 |
| Replacement Pads | 6 each | T00347T |



i-TTR Utility Tweezer

- Stainless Steel
- Thin tapered tips are serrated for additional grip
- Excellent general use utility tweezers
- Recommended for use with the RMO® i-TTR Lingual Bracket System

| Package Contains | Order Number |
|------------------|--------------|
| 1 | T00700 |