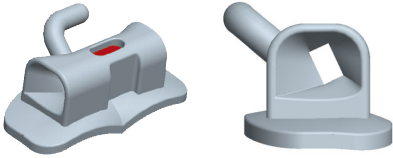


# FLI<sup>®</sup> B U C C A L T U B E S

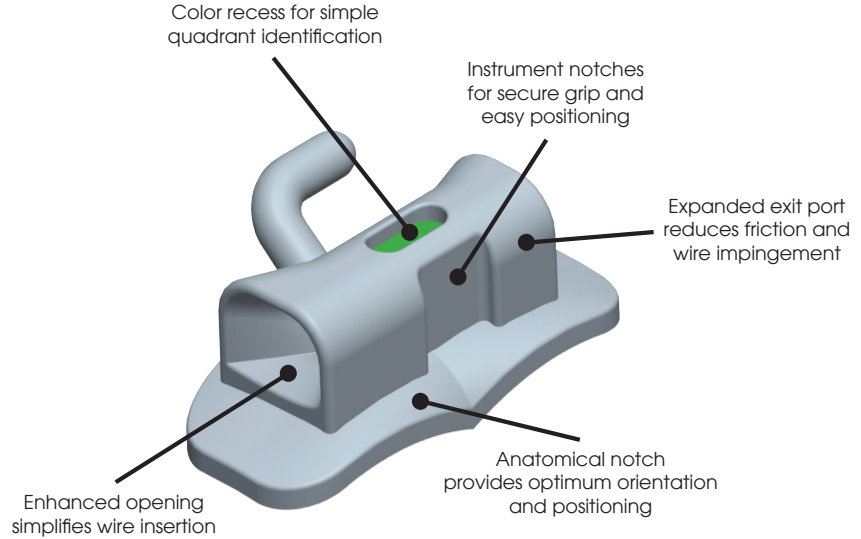
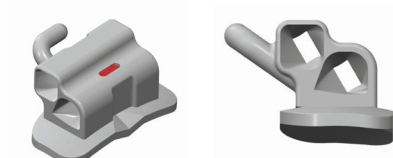
## FLI<sup>®</sup> Buccal Tubes

**RMO<sup>®</sup>'s FLI<sup>®</sup> Buccal Tubes** deliver superior performance in an extremely small package. With Metal-Injection-Molded (MIM) construction for smooth comfortable contours, the ultra-low profile design features enhanced mesial openings that make wire insertion a snap. Combined with RMO's anatomical molar pads, the FLI<sup>®</sup> Series is ideal for both direct bond and molar band applications.

### SINGLE TUBES



### DOUBLE TUBES



**Material:** Bracket- AISI 316L Stainless Steel  
 Pad - (1) AISI 316L Stainless Steel 80-gauge Foil-Mesh™  
 (2) Patented Molded RMO<sup>®</sup> Base Construction

**Competition:** 3M Unitek Victory Series™ Buccal Tubes  
 American Ortho Low Profile™ Series Buccal Tubes  
 American Ortho ifit™ Buccal Tubes  
 Ormco Accent® Buccal Tubes  
 Ortho Organizers Maestro™ Buccal Tubes  
 Ortho Classic BIOMIM® Buccal Tubes  
 Ortho Technology TruEase™ Buccal Tubes  
 Opal Ortho Avex Suite Series



Features	Benefits
Smooth, Rounded Low-Profile Design	Aesthetically inspired with enhanced patient comfort
	Reduced occlusal interference
Enlarged Funneled Entrance	Easy wire insertion provides quicker wire change
Funneled Exit	Facilitates distal-end cutting and wire bending to minimize cheek irritation
Placement Notches	Simplified handling and placement
Anatomical Base Notch	Optimal orientation and positioning reduces guesswork and chair time
	Fitted contours for easy adaptation and bonding to molar surfaces
Facial Recess	Aids scalar positioning on molars
Direct Bond Construction	Consistent and predictable bonding
	Saves chair time and hassle of banding * Note: some FLI® Tubes are offered in weldable option as well
Color Quadrant Coding	Quick and easy identification saves time
Distal-Gingival Relief	On 2 <sup>nd</sup> Molar Bases for added comfort and easy placement on partially erupted molars
Low Friction Slot	Rounded slot floor for reduced friction without sacrificing torque. * Note: offered on double tubes only

## MAXILLARY

### FIRST MOLAR SINGLE



Angulation	Torque	Distal Offset	Width	R / L	.018"		.022"	
					On Bases	Tubes Only	On Bases	Tubes Only
0°	-10°	0°	4.5 mm	UR	A08730	A06730	A08734	A06734
				UL	A08731	A06731	A08735	A06735
0°	-10°	10°	4.5 mm	UR	A18750	—	A18754	—
				UL	A18751	—	A18755	—
0°	-14°	10°	4.5 mm	UR	A08562	A05422	A08566	A05522
				UL	A08563	A05423	A08567	A05523
0°	-14°	14°	4.6 mm	UR	A08200	A05600	A08202	A05602
				UL	A08201	A05601	A08203	A05603

### FIRST MOLAR DOUBLE



Angulation	Torque	Distal Offset	M-D	R / L	.018"		.022"	
					On Bases	Tubes Only	On Bases	Tubes Only
0°	-14°	14°	4.6 mm	UR	A08216	A05616	A08218	A05618
				UL	A08217	A05617	A08219	A05619

### SECOND MOLAR



Angulation	Torque	Distal Offset	M-D	R / L	.018"		.022"	
					On Bases	Tubes Only	On Bases	Tubes Only
0°	-10°	0°	3.5 mm	UR	A08732	A06732	A08736	A06736
				UL	A08733	A06733	A08737	A06737
0°	-10°	10°	3.5 mm	UR	A18752	—	A18756	—
				UL	A18753	—	A18757	—
0°	-14°	10°	3.5 mm	UR	A08564	A05424	A08568	A05524
				UL	A08565	A05425	A08569	A05525
0°	-14°	14°	3.6 mm	UR	A08204	A05604	A08206	A05606
				UL	A08205	A05605	A8207	A05607

## MANDIBULAR FIRST MOLAR SINGLE



Angulation	Torque	Distal Offset	M-D	R / L	.018"		.022"	
					On Bases	Tubes Only	On Bases	Tubes Only
0°	-10°	0°	4.6 mm	LR	A08766	A06766	A08768	A06768
				LL	A08767	A06767	A08769	A06769
0°	-20°	0°	4.5 mm	LR	A08572	A05426	A08576	A05526
				LL	A08573	A05427	A08577	A05527
0°	-25°	0°	4.5 mm	LR	A08740	A06740	A08744	A06744
				LL	A08741	A06741	A08745	A06745
0°	-25°	5°	4.5 mm	LR	A18758	—	A18762	—
				LL	A18759	—	A18763	—
-1°	-30°	4°	4.6 mm	LR	A08208	05608	A08210	A05610
				LL	A08209	A05609	A08211	A05611

## FIRST MOLAR DOUBLE



Angulation	Torque	Distal Offset	M-D	R / L	.018"		.022"	
					On Bases	Tubes Only	On Bases	Tubes Only
-1°	-30°	4°	4.6 mm	LR	A08220	A05620	A08222	A05622
				LL	A08221	A05621	A08223	A05623

## SECOND MOLAR



Angulation	Torque	Distal Offset	M-D	R / L	.018"		.022"	
					On Bases	Tubes Only	On Bases	Tubes Only
0°	-10°	0°	3.5 mm	LR	A08574	A05428	A08578	A05528
				LL	A08575	A05429	A08579	A05529
0°	-25°	0°	3.5 mm	LR	A08742	A06742	A08746	A06746
				LL	A08743	A06743	A08747	A06747
0°	-25°	5°	3.5 mm	LR	A18760	—	A18764	—
				LL	A18761	—	A18765	—
-1°	-30°	4°	3.6 mm	LR	A08212	A05612	A08214	A05614
				LL	A08213	A05613	A08215	A05615



# FLI<sup>®</sup> MINI TUBES

**RMO<sup>®</sup>'s New FLI<sup>®</sup> Mini Tubes** are specifically designed for partially erupted 2<sup>nd</sup> molars, offering a perfect solution for early stages of bonding. The bonding base features a mesially-extended contour ideal for adapting to a small crown bonding surface. A smooth, low profile design assures both working ease and enhanced patient comfort. FLI<sup>®</sup> Mini Tubes also feature a trumpeted entry to facilitate quick and easy wire changes reducing valuable chair time.



**Material:** Bracket - AISI 17-4PH Stainless Steel  
Molded one-piece construction

**Competition:** 3M Unitek Victory Series™      Ormco Peerless<sup>®</sup> Mini Tubes  
Ortho Organizers Elite<sup>®</sup> Series      Ortho Classic Bio-Mini Tubes

Features	Benefits
Smooth, Comfortable Low-Profile Design	Aesthetically inspired with enhanced patient comfort
	Reduced occlusal interference
Mini Tube Design	Perfect for adapting to small crown surfaces as opposed to traditional direct bond tubes
Molded Contoured Base	Superior fit and predictable bonding
	Mesially-extended for ideal placement on partially erupted 2 <sup>nd</sup> molar cusps
Mushroom Style Hook	Added patient comfort through minimized cheek irritation
Flared Entry	Easy wire insertion providing quicker wire changes
Torque-in-Base	Optimal slot alignment reduces guesswork and chairtime
Unique ID	Quick and easy identification saves time

## SECOND MOLAR

ID	Torque	Distal Offset	M-D	R / L	.018"		.022"	
◆	0°	0°	2.5 mm	UR/LL	A18770		A18780	
				UL/LR	A18771		A18781	
●	-10°	0°	2.5 mm	UR	A18772		A18782	
				UL	A18773		A18783	
●	-14°	0°	2.5 mm	UR/LL	A18774		A18784	
				UL/LR	A18775		A18785	
■	-25°	0°	2.5 mm	LR	A18776		A18786	
				LL	A18777		A18787	