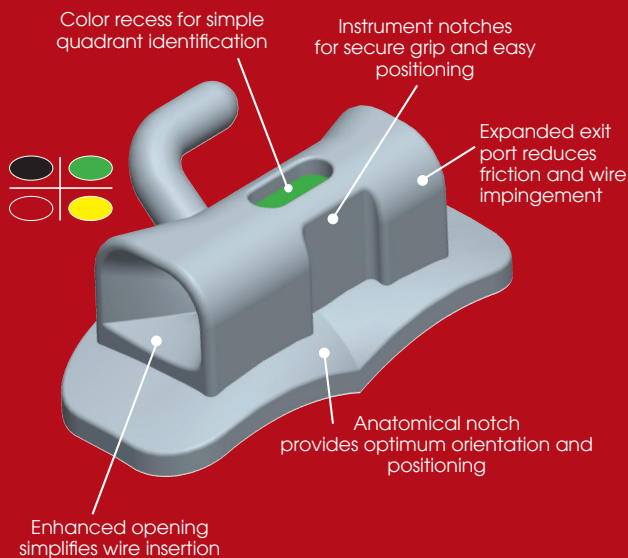




FLI® SERIES BUCCAL TUBES deliver superior performance in an extremely small package. With Metal-Injection-Molded (MIM) construction for smooth comfortable contours, the ultra-low profile design features enhanced mesial openings that make wire insertion a snap. Combined with RMO®'s anatomical bases, the FLI Series is ideal for both direct bond and molar band applications.

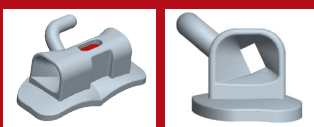
NEW FLI® MINI TUBES are specifically designed for partially erupted 2nd molars, offering a perfect solution for early stages of bonding. The bonding base features a mesially-extended contour ideal for adapting to a small crown bonding surface. A smooth, low profile design assures both working ease and enhanced patient comfort. FLI® Mini Tubes also feature a trumpeted entry to facilitate quick and easy wire changes reducing valuable chair time.



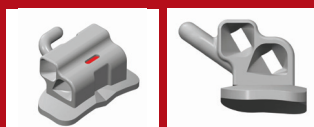
FEATURES

- Smooth, Comfortable Low-Profile Design
- Mini Tube Design
- Molded Contoured Base
- Mushroom Style Hook
- Flared Entry
- Gingivally Offset
- Torque-in-Base
- Unique ID

SINGLE TUBES



DOUBLE TUBES



Maxillary



FIRST MOLAR

Angulation	Torque	Distal Offset	M-D	R / L	.018"		.022"	
					On Bases	Tubes Only	On Bases	Tubes Only
0°	-14°	14°	4.6 mm	R	A08216	A05616	A08218	A05618
				L	A08217	A05617	A08219	A05619
0°	0°	0°	4.6 mm	R	A08770	A06770	A08774	A06774
				L	A08771	A06771	A08775	A06775
0°	-10°	0°	4.6 mm	R	A08730	A06730	A08734	A06734
				L	A08731	A06731	A08735	A06735
0°	-10°	10°	4.6 mm	R	A18750		A18754	
				L	A18751		A18755	
0°	-14°	10°	4.6 mm	R	A08562	A05422	A08566	A05522
				L	A08563	A05423	A08567	A05523
0°	-14°	14°	4.6 mm	R	A08200	A05600	A08202	A05602
				L	A08201	A05601	A08203	A05603



SECOND MOLAR

Angulation	Torque	Distal Offset	M-D	R / L	.018"		.022"	
					On Bases	Tubes Only	On Bases	Tubes Only
0°	0°	0°	3.6 mm	R	A08772	A06772	A08776	A06776
				L	A08773	A06773	A08777	A06777
0°	-10°	0°	3.6 mm	R	A08732	A06732	A08736	A06736
				L	A08733	A06733	A08737	A06737
0°	-10°	10°	3.6 mm	R	A18752		A18756	
				L	A18753		A18757	
0°	-14°	10°	3.6 mm	R	A08564	A05424	A08568	A05524
				L	A08565	A05425	A08569	A05525
0°	-14°	14°	3.6 mm	R	A08204	A05604	A08206	A05606
				L	A08205	A05605	A08207	A05607



Mandibular



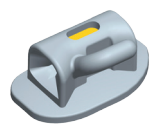
FIRST MOLAR

Angulation	Torque	Distal Offset	M-D	R / L	.018"		.022"	
					On Bases	Tubes Only	On Bases	Tubes Only
-1°	-30°	4°	4.6 mm	R	A08220	A05620	A08222	A05622
				L	A08221	A05621	A08223	A05623
0°	0°	0°	4.6 mm	R	A08778	A06778	A08782	A06782
				L	A08779	A06779	A08783	A06783
0°	-10°	0°	4.6 mm	R	A08766	A06766	A08768	A06768
				L	A08767	A06767	A08769	A06769
0°	-20°	0°	4.6 mm	R	A08572	A05426	A08576	A05526
				L	A08573	A05427	A08577	A05527
0°	-25°	0°	4.6 mm	R	A08740	A06740	A08744	A06744
				L	A08741	A06741	A08745	A06745
0°	-25°	5°	4.6 mm	R	A18758		A18762	
				L	A18759		A18763	
-1°	-30°	4°	4.6mm	R	A08208	A05608	A08210	A05610
				L	A08209	A05609	A08211	A05611



SECOND MOLAR

Angulation	Torque	Distal Offset	M-D	R / L	.018"		.022"	
					On Bases	Tubes Only	On Bases	Tubes Only
0°	0°	0°	3.6 mm	R	A08780	A06780	A08784	A06784
				L	A08781	A06781	A08785	A06785
0°	-10°	0°	3.6 mm	R	A08574	A05428	A08578	A05528
				L	A08575	A05429	A08579	A05529
0°	-25°	0°	3.6 mm	R	A08742	A06742	A08746	A06746
				L	A08743	A06743	A08747	A16747
0°	-25°	5°	3.6 mm	R	A18760		A18764	
				L	A18761		A18765	
-1°	-30°	4°	3.6 mm	R	A08212	A05612	A08214	A05614
				L	A08213	A05613	A08215	A05615



SECOND MOLAR

ID	Torque	Distal Offset	M-D	R / L	.018"		.022"	
					On Bases	Tubes Only	On Bases	Tubes Only
◆	0°	0°	2.5 mm	UR/LL	A18770		A18780	
				UL/LR	A18771		A18781	
●	-10°	0°	2.5 mm	UR	A18772		A18782	
				UL	A18773		A18783	
●	-14°	0°	2.5 mm	UR/LL	A18774		A18784	
				UL/LR	A18775		A18785	
■	-25°	0°	2.5 mm	LR	A18776		A18786	
				LL	A18777		A18787	



P00746 Rev. E