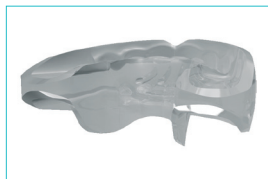


Multi-S® - Multi-Start Appliance



Ideal for children between 4 and 8 years old, the appliance reduces the muscular forces and promotes proper alignment of the teeth. One size fits all and is easily adjustable to each patient.

Order Number	Package Contains
J00805	1 each
J00806	5 each

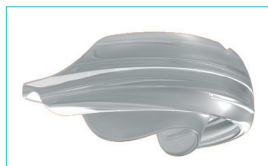
Multi-T® - Multi-Trainer Appliance



A pre-orthodontic treatment appliance designed to improve facial and dental development in children (mixed dentition) and reduce problems associated with: swallowing, thumb sucking, tongue thrusting, labial dysfunction, respiratory problems.

Order Number	Package Contains
J00800	1 each
J00801	5 each

Multi-TB® - Multi-Trainer for Brackets



Suitable for both children and adults wearing brackets. One size fits all, easily adjustable to each patient.

Order Number	Package Contains
J00990	1 each
J00991	5 each

Multi-P® - Multi-Positioner Appliance



The Multi-P guides erupting teeth with the help of the patient's own muscle forces to an ideal position in the dental arches. A good occlusion is established and development of severe malocclusions avoided. The appliance has a high and low model. The high model, designed for the treatment of open bite cases, has a thickened molar region. Measurements are from left side to right side between lateral and cuspid.

Low Model		High Model		Maxillary Measurement (mm)	Mandibular Measurement (mm)
Size Number	Part Number	Size Number	Part Number		
10	J00810			24.8 -25.9	18.8 -19.5
15	J00815			26 -27.1	19.6 -20.3
20	J00820	20	J00920	27.2 -28.3	20.4 -21.1
25	J00825	25	J00925	28.4 -29.5	21.2 -21.9
30	J00830	30	J00930	29.6 -30.7	22 -22.7
35	J00835	35	J00935	30.8 -31.9	22.8 -23.5
40	J00840	40	J00940	32 -33.1	23.6 -24.3
45	J00845	45	J00945	33.2 -34.3	24.4 -25.1
50	J00850	50	J00950	34.4 -35.5	25.2 -25.9
55	J00855	55	J00955	35.6 -36.7	26 -26.7
60	J00860	60	J00960	36.8 -37.9	26.8 -27.5
65	J00865	65	J00965	38 -39.1	27.6 -28.3
70	J00870	70	J00970	39.2 -40.3	28.4 -29.1



Order Number	Package Contains
J00980	1 each

Multi-P® Sizer